

# Hotel Glacier, Grindelwald

2019

---



The Hotel Glacier in Grindelwald is more than a hotel. It is a house for all senses. During the total renovation in 2018, Timbatec developed a property-specific fire protection concept in close cooperation with GVB.

## The project

The project The Hotel Glacier has a 150-year history. As a four-star hotel, it should continue to meet the high demands of guests in the future. This required a total renovation. A great deal of attention was paid to fire protection. The existing sprinkler system was decommissioned and the structural fire protection upgraded. On the first floor, an existing steel interception structure supports the floors above. Timbatec developed a fire protection upgrade for this structure. Furthermore, the escape stairwell had to be partially redesigned so that the escape route widths and lengths could be maintained everywhere.

## The construction

Thanks to a detailed inventory of the fire-protection components and the early and good cooperation with the GVB and the planning team, the hotel was renovated and brought up to today's fire protection requirements. Old ceilings were partially replaced by new fire-protection planked solid wood ceilings. Existing beam layers were strengthened by means of cladding to ensure the fire resistance of REI60. The entire hotel was equipped with a fire alarm system.

## The challenge

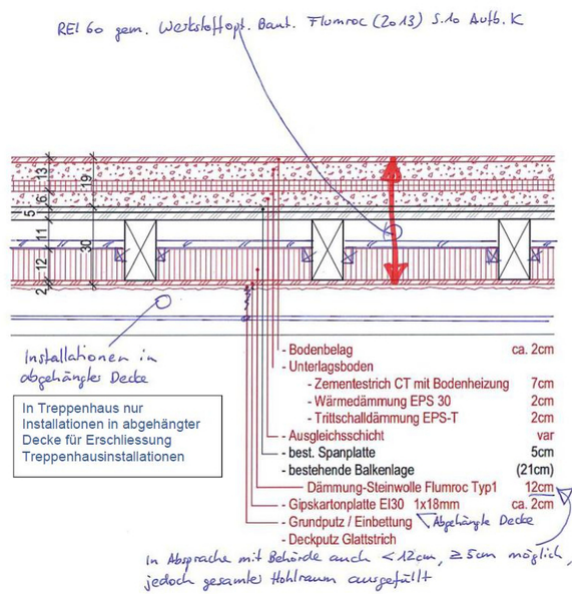
A major challenge was the routing of pipes and ventilation in the conversion. With well thought-out planning and the clever positioning of fire dampers, their number was reduced to a minimum. Due to tight space conditions, some of the pipe routing had to be modified to ensure accessibility for the creation of fire protection bulkheads in ceilings and walls.



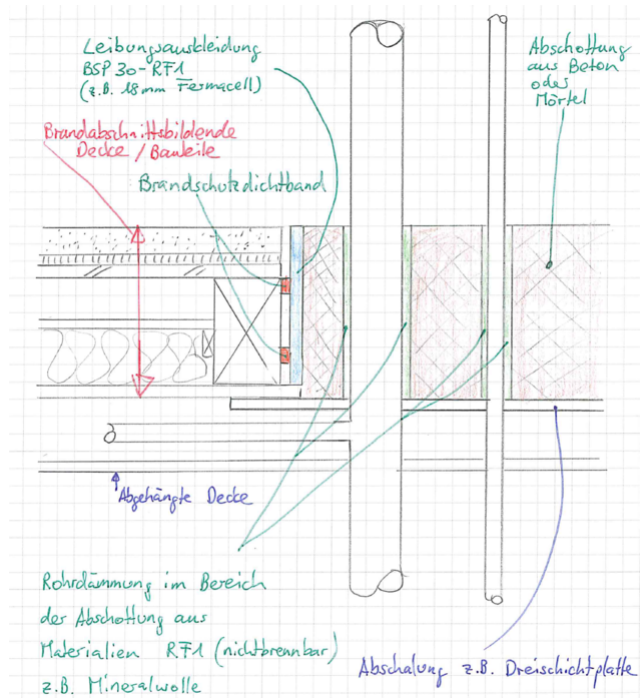
Ceiling before retrofitting



HEB beam clad



System sketch retrofit



System sketch bulkheads

### Construction Data

- Object-specific fire protection concept

### Services of Timbatec

- SIA Phase 11 Condition analysis
- SIA Phase 21 Structural analysis
- SIA Phase 31 Preliminary design
- SIA Phase 32 Construction project
- SIA Phase 41 Tendering and comparison of offers
- Fire protection planning
- Fire protection Quality assurance QSS2
- Site management and site inspections

### Architect

Bofor Design GmbH 3646 Einigen

### Client

Hotel-Restaurant Glacier AG 3818 Grindelwald

### Timber construction

KA-Holzbau 3818 Grindelwald

### Site management

construction Thomas Stoller 3607 Thun